



**THE TARNEIT PLACE**

*—your lifestyle precinct—*

# Fixed Price House & Land Package



## FREE \$60K PACKAGE UPGRADE

### PACKAGE INCLUSIONS

- 2590MM CEILING HEIGHT
- LETTERBOX
- DISHWASHER
- BLINDS THROUGHOUT
- FRONT LANDSCAPING
- OVERHEAD CUPBOARDS TO FRIDGE
- RECYCLED WATER
- EVAP COOLING
- NBN
- TILED SHOWER NICHES X2
- 40MM BENCHTOP TO KITCHEN ISLAND BENCH
- ENSUITE SHOWER 900MM X 1200MM
- DIGITAL TV ANTENNA
- ALARM SYSTEM
- 7INCH LCD VIDEO INTERCOM
- STEEL LINTEL WITH BRICK INFILL ABOVE GARAGE
- CLOTHES LINE
- 700MM LAMINATE OVERHEAD CUPBOARDS TO KITCHEN
- GLASS SPLASHBACK TO KITCHEN
- FIXED SITE COSTS INCLUDED

Contact The Tarneit Place Team on 1300 762 532

Visit our sales office – open 7 days, 10am to 6pm

1226 - 1246 Dohertys Rd, Tarneit, Victoria 3029, Australia

Email us at [info@thechattels.com.au](mailto:info@thechattels.com.au)

**[thetarneitplace.com.au](http://thetarneitplace.com.au)**

**MADISON 22**

**\$559,590\***

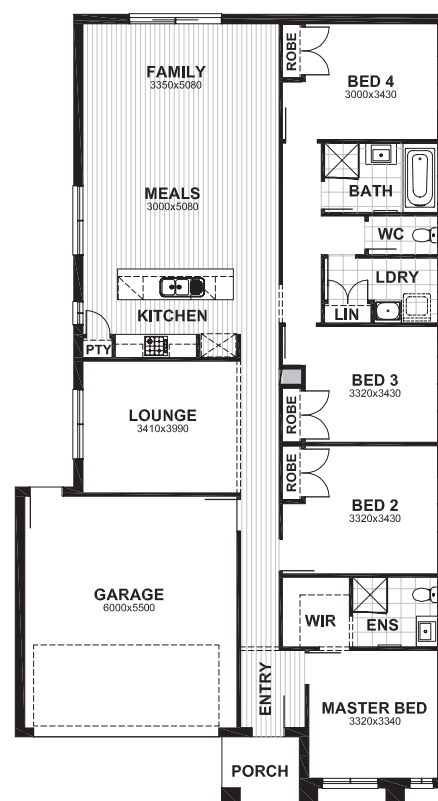
**LOT 208 (400M<sup>2</sup>) STAGE 2**

**ELAINE STREET, TARNEIT**

2	4	2	2

**SHERRIDON  
HOMES**

A HIGHER STANDARD



\*Fixed Price current as at 21/05/2019. Hebel homes may be smaller than dimensions shown on the floorplan due to the external wall thickness; see working drawings for Hebel home dimensions. Package price excludes external lighting, telephone service, customer account opening fees, stamp duty, on land, legal fees and conveyancing costs including titles and property report. \*Carpet and timber laminate flooring from Sherridon Homes Category 1 selection. Sherridon Homes reserves the right to alter the images or descriptions without notice. All home & land packages cannot be used in conjunction with any other Sherridon offers or discounts. All home & land packages are subject to developer and council approval. Land prices and availability are subject to change without notice. Registered Building Practitioner CDB-U50039 ©2019 Sherridon Homes Pty Ltd. Region: Greenfields. 13.06.2019