



THE TARNEIT PLACE

—your lifestyle precinct—

Fixed Price House & Land Package



AMBER

FROM **\$509,000***

**LOT 102 (386M²) STAGE 1
NOEL WAY, TARNEIT**

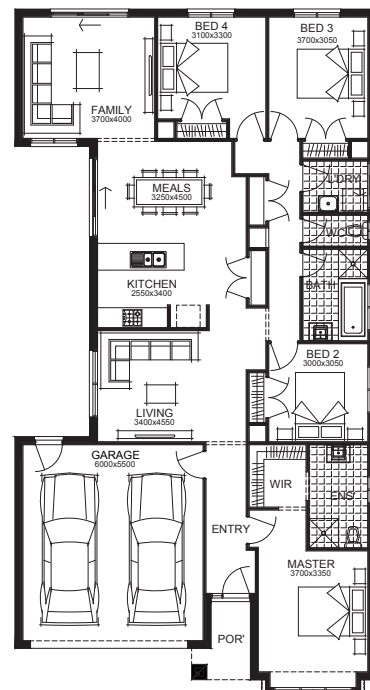
2	4	2	2

PACKAGE INCLUSIONS

- 3 COAT PAINT APPLICATION
- FREESTANDING STAINLESS STEEL DISHWASHER
- RECYCLED WATER, CONNECTION TO TOILETS
- DATA PACK: NBN OR OPTICOM (AS PER DEVELOPER)
- FLYSCREENS TO OPENABLE WINDOWS
- EVAVES TO THE FRONT
- FREE FLOORING
- TILED SHOWER BASE
- SECTIONAL LIFT GARAGE DOOR

Xpress
Built by **SIMONDS**

CHERVIL (21.73)



Contact The Tarneit Place Team on 1300 762 532
Visit our sales office – open 7 days, 10am to 6pm
1226 - 1246 Dohertys Rd, Tarneit, Victoria 3029, Australia
Email us at info@thechattels.com.au

thetarneitplace.com.au



Images shown are for illustrative purposes and may not represent the final product. Prices are based on availability and price of land. Simonds reserves the right to alter any price or substitute any home without prior notice. All house and land packages are subject to developers approval. In the event that a Homesite does not have the Survey Pegs in place to identify lot boundary then an additional change will be added to the cost of the house.