



THE TARNEIT PLACE

—your lifestyle precinct—

Fixed Price House & Land Package



FROM **\$497,450***

**LOT 237 (384M²) STAGE 2
NASCENT DRIVE, TARNEIT**

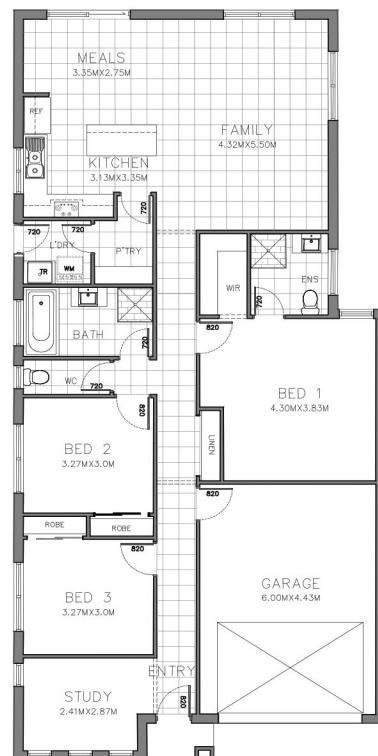
1	3	2	2

PACKAGE INCLUSIONS

- 6 STAR ENERGY RATED HOME
- 900MM X 900MM TILED SHOWER BASE
- 3 IN 1 EXHAUST FAN/HEATER IN BATHROOMS
- DUCTED HEATING INCLUDED
- STAINLESS STEEL APPLIANCES INCL DISHWASHER
- 2040X820 ENTRY DOOR PAINTED GLOSS ENAMEL
- STANDARD MANUAL PANEL LIFT DOOR TO GARAGE
- SOLAR HOT WATER SYSTEM WITH ONE PANEL
- CHROME TOILET ROLL HOLDERS AND TOWEL RAILS
- 2440MM CEILING HEIGHT
- 43 LITRE STAINLESS STEEL TROUGH WITH METAL CABINET
- NBN
- RECYCLED WATER
- FIXED SITE COST

Contact The Tarneit Place Team on 1300 762 532
Visit our sales office - open 7 days, 10am to 6pm
1226 - 1246 Dohertys Rd, Tarneit, Victoria 3029, Australia
Email us at info@thechattels.com.au

thetarneitplace.com.au



The advertised price is based on the builder standard specifications and the advertised inclusions list. The builder and developer reserve the right to amend specification and price without notice. All plans and images are indicative concepts and include features not necessarily supplied by the builder including without limitation: facade, furniture, lighting, fencing and landscaping. Building covenants and design guidelines requirements apply to the land. Pricing is correct at the time of the publication, but may change as a result of variations in the inclusions or specifications of the home required by the buyer or due to any other circumstances. Package price does not include covenants and design guidelines.