



Price excludes: Fencing, Landscaping, Concrete pavers, Planter boxes, Decking

FIXED PRICE

\$520,988*

LOT 508 KINGSLEY
PROMENADE
PROVENANCE ESTATE
HUNTLY

SEATON 23
TRADITIONAL FACADE

BLOCK SIZE | 540M²



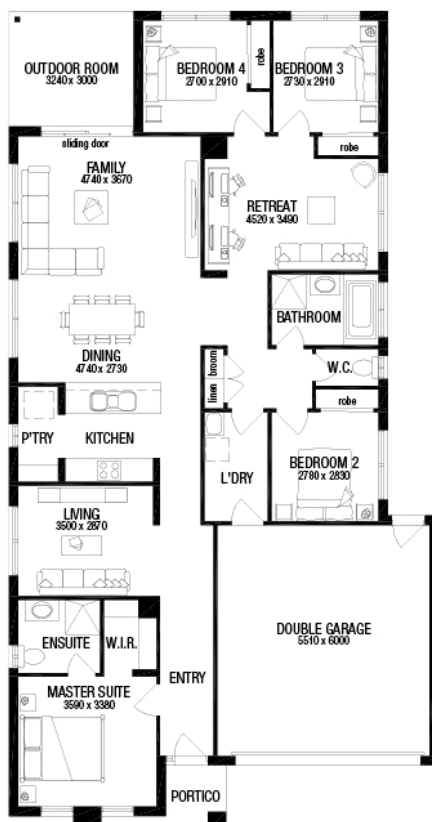
4



2



2



FIXED PRICE PACKAGE INCLUDES:

THE SEATON 23 WITH TRADITIONAL FACADE BUILT TO OUR INDUSTRY LEADING BASE SPECIFICATIONS AND LAND, PLUS:

- ✓ Fixed site costs[^]
- ✓ Laminate timber flooring
- ✓ Luxury carpet to bedrooms
- ✓ Stainless steel oven & cooktop
- ✓ Contemporary tapware
- ✓ Stainless steel canopy rangehood
- ✓ Remote controlled garage door
- ✓ 900mm kitchen appliance
- ✓ 20mm stone benchtop to Kitchen
- ✓ Stainless steel dishwasher
- ✓ Lifetime structural guarantee[#]
- ✓ BAL 12.5 requirements[°]



**Easy &
Affordable.**

1300 METRICON
www.metricon.com.au

BUILD WITH CONFIDENCE

LIFETIME
STRUCTURAL GUARANTEE

homesolution

m
metricon

*Image may include upgrade items and may depict fixtures, finishes and features not supplied by Metricon such as landscaping, fencing and driveway. Accordingly, any prices do not include the supply of any of those items. Packages correct at time of printing and subject to change without notice. Package price excludes external lighting, telephone service, customer account opening fees, stamp duty on land, legal fees and conveyancing costs including titles and property report. Floorplan is a representation of an Aspire façade unless otherwise stated. Metricon reserves the right to alter the images or descriptions without notice. See metricon.com.au for full details of standard inclusions and/or terms and conditions. Land prices and availability are subject to change without notice. All home & land packages are subject to developer approval. [#]For details on our lifetime structural guarantee please read our terms and conditions at <http://www.metricon.com.au/terms> Newfield Real Estate Pty Ltd ACN 159 312 722, Licence number 028051L. VIC Builder's Licence: CDB-U 52967. Package Printed Date: 28/09/2021 Price Region: Bendigo