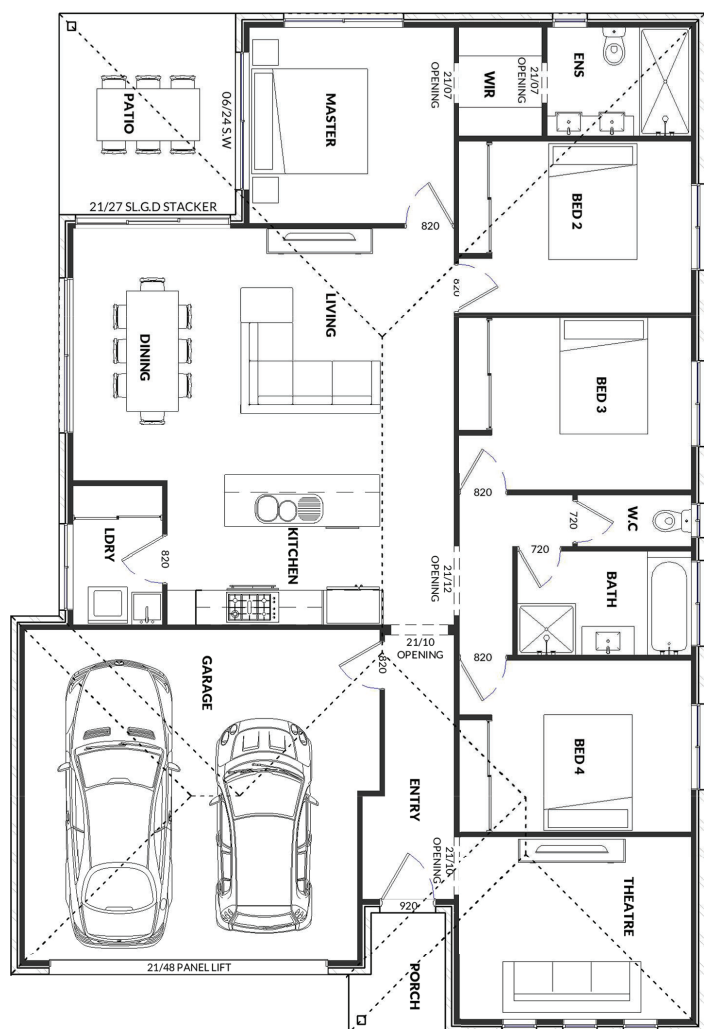













# UCRES 201

Lot 660  
476m<sup>2</sup>

## Home & Land from \$524,495



-  Wilder facade
-  Fixed site costs
-  20mm stone benchtops in kitchen
-  900mm kitchen appliances
-  Ducted evaporative cooling
-  Gas ducted heating
-  Vynal plank flooring to living areas
-  Tiled shower bases
-  Exposed aggregate driveway



2



4



2



2

**CALL US NOW**  
**0407 499 179**

Homes by  CDLS

Homes by CDLS Pty Ltd reserves the right to remove facades and plans without notice. Fixtures and fittings in photos may not be available. Photos may contain landscaping and finishing touches not included in Homes by CDLS Pty Ltd inclusions. Colours may vary between production times on all products related to building. Any questions please call us on 03 5400 2507.