

## Liberty 23 Vogue façade. Package from \$590,400

 4  2  2

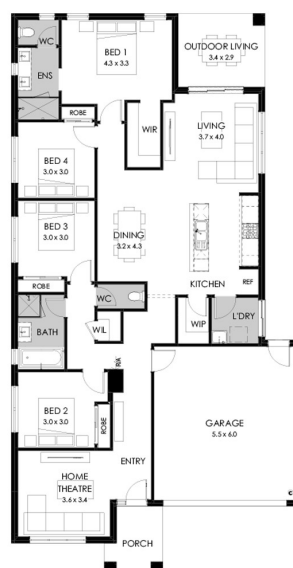


### Lot 827 Delawarr Parade Huntly Provenance Estate

**Land size:** 480m<sup>2</sup>

**Home Size:** 209.13m<sup>2</sup>

- Stylish facade with rendered feature
- Double glazing (including sliding doors)
- Remote sectional garage door (includes two remotes)
- 2400mm high ceilings to ground floor
- Ample lights and double power points
- Gas ducted heating with programmable thermostat
- 2 x banks of pot drawers
- Westinghouse 600mm wide oven, cooktop and rangehood
- Oversize kitchen island bench with overhang
- Tiled splashback
- Quality Caroma basins and tapware
- Polished edge mirror above vanity benchtops
- 25 Year Structural Guarantee
- 12 Year Maintenance



YOUR LOCAL NEW HOMES CONSULTANT

**Chloe Whitehead 0409 862 052** [cwhitehead@boutiquehomes.com.au](mailto:cwhitehead@boutiquehomes.com.au)

Price based on floor plan shown and on builder's preferred siting. Floor plan depicts a modern facade shown and included in price. Image used is an artist impression for illustrative purposes only and may show decorative items not included in the price shown including path, fencing, landscaping, coach lights and furnishings. The price is based on developer supplied engineering plans and plans of subdivision and final pricing may vary if actual site conditions differ to those shown in these developer supplied documents. Block and building dimensions may vary from the illustration and the details shown. The price does not include transfer duty, settlement costs, community infrastructure levies imposed or any other fees or disbursements associated with the settlement of the land. Additions to the contract may be required in order to comply with Council and Regulatory Authority requirements which may also affect the price. Pricing subject to change without notice. Further terms and conditions apply to this offer including with respect to the price, for the full terms and conditions please visit <http://www.boutiquehomes.com.au/disclaimer>.

[Home design] [Façade name] façade.  
**Package from \$000,000**

 4  2  2



Lot [#] [Street Name],  
[Suburb]  
[Estate name]

**Land size:** 000m<sup>2</sup>

**Home Size:** 000m<sup>2</sup>

- Stylish facade with rendered feature
- Double glazing (including sliding doors)
- Remote sectional garage door (includes two remotes)
- 2400mm high ceilings to ground floor
- Ample lights and double power points
- Gas ducted heating with programmable thermostat
- 2 x banks of pot drawers
- Westinghouse 600mm wide oven, cooktop and rangehood
- Oversize kitchen island bench with overhang
- Tiled splashback
- Quality Caroma basins and tapware
- Polished edge mirror above vanity benchtops
- 25 Year Structural Guarantee
- 12 Year Maintenance

YOUR LOCAL NEW HOMES CONSULTANT

[Name] [mobile] | [email]@boutiquehomes.com.au

Price based on floor plan shown and on builder's preferred siting. Floor plan depicts a modern facade shown and included in price. Image used is an artist impression for illustrative purposes only and may show decorative items not included in the price shown including path, fencing, landscaping, coach lights and furnishings. The price is based on developer supplied engineering plans and plans of subdivision and final pricing may vary if actual site conditions differ to those shown in these developer supplied documents. Block and building dimensions may vary from the illustration and the details shown. The price does not include transfer duty, settlement costs, community infrastructure levies imposed or any other fees or disbursements associated with the settlement of the land. Additions to the contract may be required in order to comply with Council and Regulatory Authority requirements which may also affect the price. Pricing subject to change without notice. Further terms and conditions apply to this offer including with respect to the price, for the full terms and conditions please visit <http://www.boutiquehomes.com.au/disclaimer>.