



Madison Facade

FRAZIER 25


Price from

\$536,450

Provenance Estate

Lot 740 400sqm

12.5x32

 4 Bedrooms

 2 Livingroom

 2 Bathroom

 2 Parking

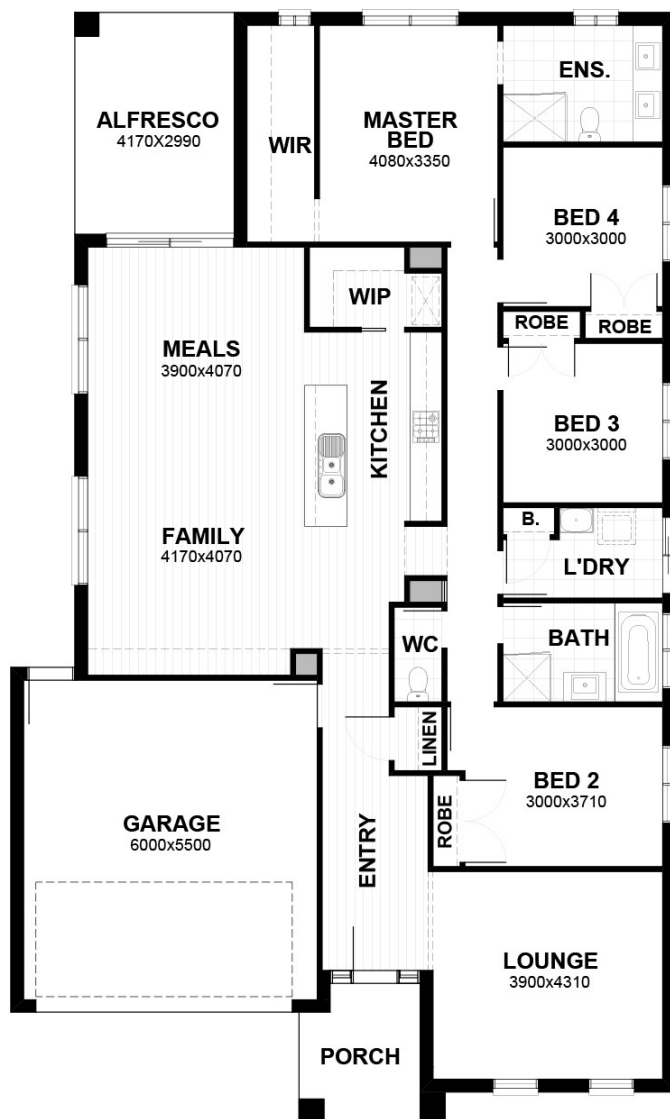
Package Includes

- Fixed price site costs & Connections
- Developer and Council Requirements
- Timber laminate flooring and carpet throughout
- 20mm edge stone benchtops to kitchen
- 900mm stainless steel freestanding cooker and 900mm canopy rangehood
- Ducted gas heating with Ceiling vents
- 2590mm high ceilings to ground floor
- Quality fixtures and fittings throughout
- Timber flooring to kitchen/entry/hall/meals/dining (floorplan specific)
- Contracts in just 24 hrs and more!

For more information contact:

Amanda Lee

0413 833 874



Terms and conditions apply. Floor plans, facade images and photographs are for illustrative purposes only and may not represent the final product shown. Furniture, accessories, landscaping and decks are not supplied by First-Place. Some facade inclusions shown may not be included in our final product and may be for display purposes only. Purchasers should refer to their new home sales consultant for more information. Visit www.first-place.com.au for full terms and conditions. CDB-U50038

MAKE

First-Place

**YOUR ONLY
PLACE**

first-place.com.au | 1800 1FIRST