

Simonds Homes Range

VICTORIA

ELEVATE
UPGRADESUP TO
\$39,100*
WORTH OF INCLUSIONS
FOR JUST **\$5,000***Lot 748, Provenance Estate - HUNTLY (748)m²

FROM* PRICE

\$657,600*

*First home owners Price - \$647,600

ALTONA 22_211

MURRAY



3



2



2



1



22sq

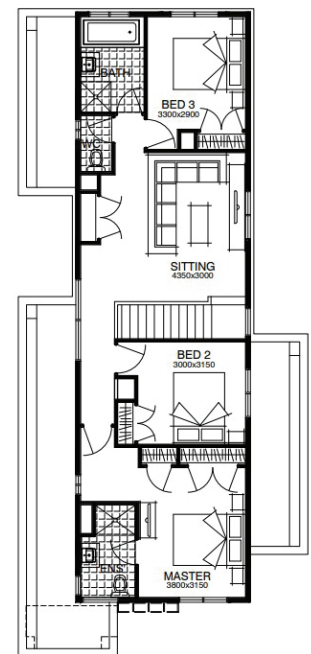
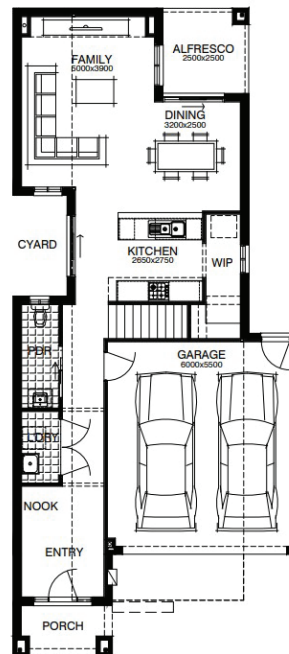
PACKAGE INCLUSIONS:

- ▼ Developer & Council requirements
- ▼ Floor coverings to entire house
- ▼ Coloured concrete driveway & path
- ▼ Euro stainless steel cooktop & oven
- ▼ Tiled skirting to bathrooms
- ▼ Ducted heating
- ▼ R2.5 insulations batts to ceiling & sisalation to walls
- ▼ 6 star energy rating
- ▼ Estate covenants
- ▼ And much more!

For enquiries please contact:

Vanessa Brewis - 0407 536 461

vanessa.brewis@simonds.com.au

 simonds.com.au

*From pricing is based on standard plan, builders preferred siting, site costs allowance, and is subject to extreme site changes beyond our reasonable control and unknown at the time of print. All packages are subject to Developer and Council approval. Package Price does not include stamp duty, government, legal or bank charges. Community Infrastructure Levy and Asset Protection Permit are not included in pricing and is to be arranged by the client directly with the Developer (if applicable). Any alterations may incur additional charges. Confirm land price and availability prior to purchase. Simonds reserves the right to withdraw or amend pricing, inclusions and promotion at any time without notice. *Please refer to the terms and conditions at www.simonds.com.au/terms-and-conditions. This package applies to VIC New Living Small Lot range only. Please speak with your sales consultant for further details. Pricing is current at 10/11/2022.