

METRO

SINGLE & DOUBLE STOREY HOMES

RISE UPGRADES
\$12,500*Plus
FLOORING PACK 'A'
Service fees for floor of upgraded home with packaging
for 1200sqm carpet and 1200sqm timber
for 1200sqm carpet and 1200sqm timber of
\$12,500Lot 632, Provenance Estate - HUNTLY (480)m²

FROM* PRICE

\$561,160*

*First home owners Price - \$551,160

HIGHBRIDGE 21_197
SAGAMORE

3



2



2



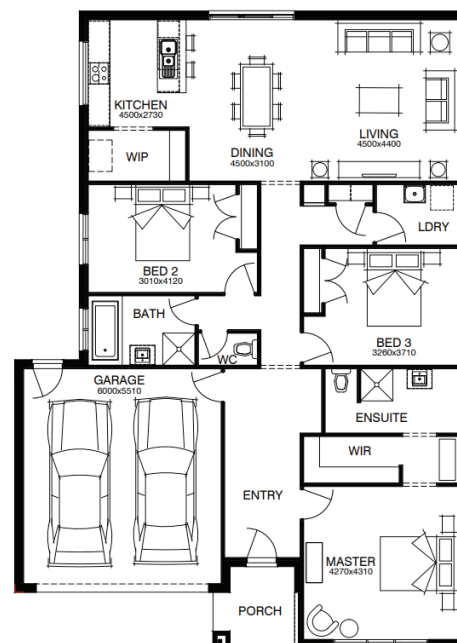
1



21sq

PACKAGE INCLUSIONS:

- ◆ Developer & Council requirements
- ◆ Floor coverings to entire house
- ◆ Coloured concrete driveway & path
- ◆ Euro stainless steel cooktop & oven
- ◆ Tiled skirting to bathrooms
- ◆ Ducted heating
- ◆ R2.5 insulations batts to ceiling & sisalation to walls
- ◆ 6 star energy rating
- ◆ Estate covenants
- ◆ And much more!

For enquiries please contact:**Vanessa Brewis - 0407 536 461****vanessa.brewis@simonds.com.au** simonds.com.au**provenance**
HUNTLY - BENDIGO**SIMONDS**
BUILDING HOMES SINCE 1949

*From pricing is based on standard plan, builders preferred siting, site costs allowance, and is subject to extreme site changes beyond our reasonable control and unknown at the time of print. All packages are subject to Developer and Council approval. Package Price does not include stamp duty, government, legal or bank charges. Community Infrastructure Levy and Asset Protection Permit are not included in pricing and is to be arranged by the client directly with the Developer (if applicable). Any alterations may incur additional charges. Confirm land price and availability prior to purchase. Simonds reserves the right to withdraw or amend pricing, inclusions and promotion at any time without notice. *Please refer to the terms and conditions at www.simonds.com.au/terms-and-conditions. This package applies to VIC Metro range only. Please speak with your sales consultant for further details. Pricing is current at 10/11/2022.