



Price excludes: Fencing, Landscaping, Concrete pavers, Planter boxes, Decking

\$561,793*

LOT 632 HESTER STREET
PROVENANCE ESTATE
HUNTLY

CARINE 17
KINGSTON FACADE

BLOCK SIZE | 480M²



3



2

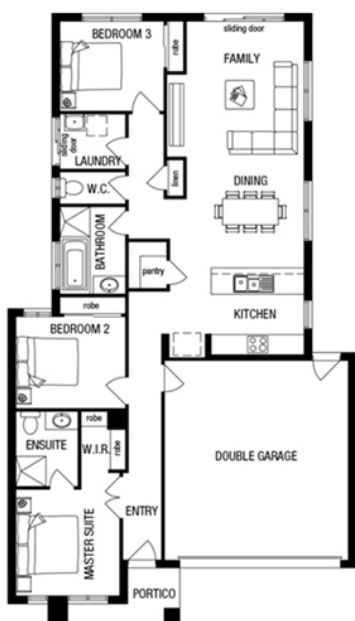


2

PACKAGE INCLUDES:

THE CARINE 17 WITH KINGSTON FACADE BUILT TO OUR INDUSTRY LEADING BASE SPECIFICATIONS AND LAND, PLUS:

- ✓ Value Inclusions
- ✓ Lifetime structural guarantee#
- ✓ 20mm stone benchtop to Kitchen
- ✓ Large 900mm wide stainless steel appliances
- ✓ Stainless steel dishwasher
- ✓ 2550mm high ceilings
- ✓ Gas ducted heating
- ✓ Remote control garage door
- ✓ Concrete driveway and path (up to 35m²)
- ✓ BAL 12.5 requirements^
- ✓ Fibre optic package
- ✓ Solar Hot Water System
- ✓ Tiled shower base to bathroom and ensuite
- ✓ Evaporative Cooling
- ✓ 450mm Eaves front facade



Traditional floorplan shown will vary from facade image shown. Floorplan does not reflect developer guidelines.



1300 METRICON |
www.metricon.com.au

FREEDOM

m
metricon

*Home and Land Package price correct at time of printing and subject to change without notice. Package price excludes external lighting, telephone service, customer account opening fees, stamp duty on land, legal fees and conveyancing costs including titles and property report. See your Metricon new home advisor for full details of standard inclusions. Land supplied by developer. Land prices and availability are subject to change without notice. All home & land packages are subject to developer approval. #For details on our Lifetime structural guarantee visit metricon.com.au/terms/structuralguarantee. Newfield Real Estate Pty Ltd ACN 159 312 722, Licence number 028051L. VIC Builder's Licence: CDB-U 52967 +Typical site cost allowance included in the price. Additional site costs may apply if site survey and soil tests indicate the presence of fill or more than 300mm of land fall or presence of rock above the typical site allowance made. Package Printed Date: 02/12/2022 Price Region: Bendigo