

# HOME & LAND PACKAGE

## METRO

SINGLE & DOUBLE STOREY HOMES

RISE UPGRADES  
**\$12,500\***

Plus  
FLOORING PACK 'A'

Sample floor plan only. All figures are approximate and subject to change. The 'METRO' upgrade pack includes a range of options for the kitchen, bathroom, and flooring. For more information, please contact your sales consultant.

Lot 850, Provenance Estate - HUNTLY (375)m<sup>2</sup>

FROM\* PRICE

# \$554,300\*

\*First home owners Price - \$544,300

LENOX 22\_207

MET



4



2



2



2



22sq

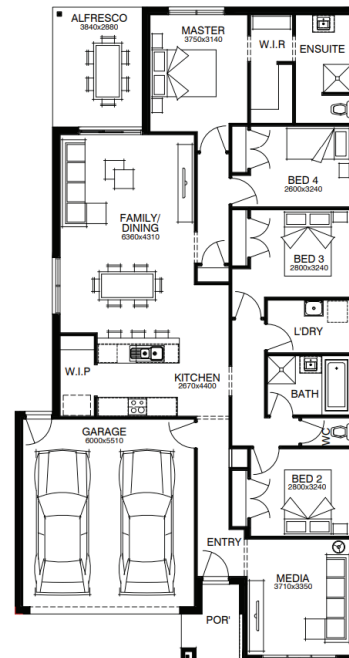
### PACKAGE INCLUSIONS:

- ◆ Developer & Council requirements
- ◆ Floor coverings to entire house
- ◆ Coloured concrete driveway & path
- ◆ Euro stainless steel cooktop & oven
- ◆ Tiled skirting to bathrooms
- ◆ Ducted heating
- ◆ R2.5 insulations batts to ceiling & sisalation to walls
- ◆ Estate covenants
- ◆ And much more!

**For enquiries please contact:**

**Vanessa Brewis - 0407 536 461**

**vanessa.brewis@simonds.com.au**



provenance  
HUNTLY - BENDIGO

**SIMONDS**  
BUILDING HOMES SINCE 1949

 [simonds.com.au](https://simonds.com.au)

\*From pricing is based on standard plan, builders preferred siting, site costs allowance, and is subject to extreme site changes beyond our reasonable control and unknown at the time of print. All packages are subject to Developer and Council approval. Package Price does not include stamp duty, government, legal or bank charges. Community Infrastructure Levy and Asset Protection Permit are not included in pricing and is to be arranged by the client directly with the Developer (if applicable). Any alterations may incur additional charges. Confirm land price and availability prior to purchase. Simonds reserves the right to withdraw or amend pricing, inclusions and promotion at any time without notice. \*Please refer to the terms and conditions at [www.simonds.com.au/terms-and-conditions](https://www.simonds.com.au/terms-and-conditions). This package applies to VIC Metro range only. Please speak with your sales consultant for further details. Pricing is current at 23/02/2023.