

# House & Land Package

Simonds Homes  
Range

FINISHING  
TOUCHES

UPGRADES DESIGNED FOR LIFE

EXCEED  
UPGRADES  
UP TO

**\$78,400\***

WORTH OF INCLUSIONS

NOW FREE!

STRUCTURAL  
*Lifetime*  
GUARANTEE

LOT 839, PROVENANCE ESTATE, HUNTLY, 3551

## Barnard 22\_207

BURROWA

FROM\* PRICE

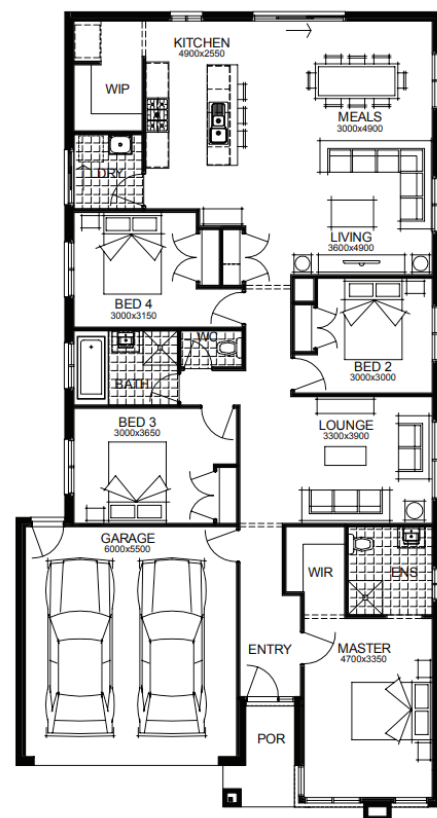
# \$560,976\*

FIRST HOME OWNERS PRICE:

**\$550,976**

### PACKAGE INCLUSIONS:

- Developer & Council requirements
- Floor coverings to entire house
- Coloured concrete driveway & path
- Euro stainless steel cooktop & oven
- Tiled skirting to bathrooms
- Ducted heating
- R2.5 insulation batts to ceiling & sisalation to walls
- Estate covenants
- And much more!



For enquiries please contact:

**Vanessa Brewis** 0407 536 461  
vanessa.brewis@simonds.com.au

 **provenance**  
HUNTLY - BENDIGO

  
**SIMONDS**  
THE GREAT AUSTRALIAN BUILDER

Images shown are for illustrative purposes only and may not represent the final product such as lighting, window furnishings, timber look garage door & timber windows. Façade details including entry door and window sizing may vary between house types. Pricing also excludes features such as fencing, landscaping, letterbox, decking, driveway and any notable features of the façade. Please speak with your sales consultant for further details. All Fixed Price Home and Land packages are subject to Developer and Council approval and is based on Simonds standard floor plan with preferred siting (without alterations). Package Price does not include stamp duty, government, legal or bank charges. Community Infrastructure Levy and Asset Protection Permit are not included in pricing and is to be arranged by the client directly with the Developer (if applicable). Any alterations may incur additional charges. Confirm land price and availability prior to purchase. Simonds reserves the right to withdraw or amend pricing, inclusions and promotion at any time without notice. Please refer to the terms and conditions at [www.simonds.com.au/terms-and-conditions](http://www.simonds.com.au/terms-and-conditions). This package applies to VIC Range range only. Please speak with your sales consultant for further details. Pricing is current at 16/03/2023.