

House & Land Package

Xpress
Built by **SIMONDS**

**XPRESS
YOURSELF!**

Select your floorplan, facade and colour palette then complete your new home with flooring.

**TRIPLE
YOUR MONEY**

PAY \$0 AND GET

\$15,000

To spend on upgrades*

FREE

**STRUCTURAL
Lifetime
GUARANTEE**

LOT 861, PROVENANCE ESTATE, HUNTLY, 3551

Ingram 20_186

CHRYSLER

3 2 2 1

FROM* PRICE

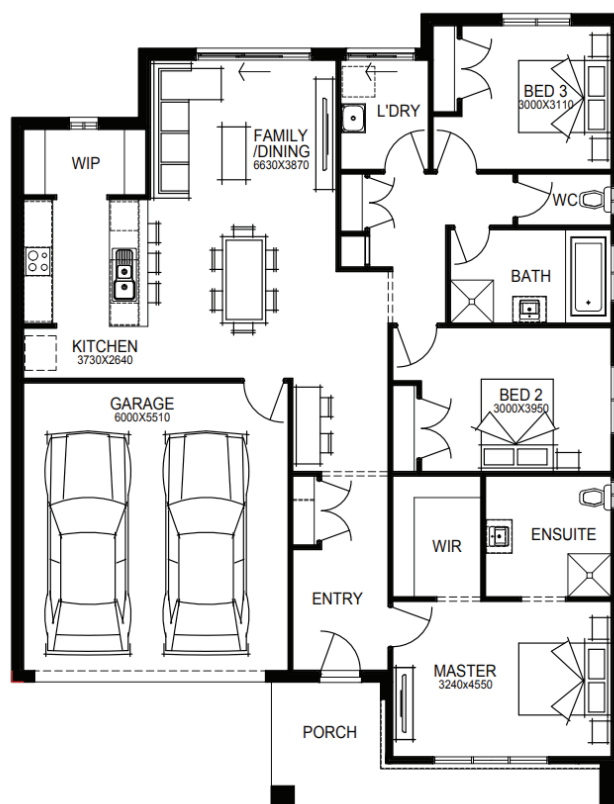
\$522,478*

FIRST HOME OWNERS PRICE:

\$512,478

PACKAGE INCLUSIONS:

- Developer & Council requirements
- Floor coverings to entire house
- Coloured concrete driveway & path
- Euro stainless steel cooktop & oven
- Tiled skirting to bathrooms
- Ducted heating
- R2.5 insulation batts to ceiling & sisalation to walls
- Estate covenants
- And much more!



For enquiries please contact:

Vanessa Brewis 0407 536 461
vanessa.brewis@simonds.com.au

provenance
HUNTLY - BENDIGO

SIMONDS
THE GREAT AUSTRALIAN BUILDER

Images shown are for illustrative purposes only and may not represent the final product such as lighting, window furnishings, timber look garage door & timber windows. Façade details including entry door and window sizing may vary between house types. Pricing also excludes features such as fencing, landscaping, letterbox, decking, driveway and any notable features of the façade. Please speak with your sales consultant for further details. All Fixed Price Home and Land packages are subject to Developer and Council approval and is based on Simonds standard floor plan with preferred siting (without alterations). Package Price does not include stamp duty, government, legal or bank charges. Community Infrastructure Levy and Asset Protection Permit are not included in pricing and is to be arranged by the client directly with the Developer (if applicable). Any alterations may incur additional charges. Confirm land price and availability prior to purchase. Simonds reserves the right to withdraw or amend pricing, inclusions and promotion at any time without notice. Please refer to the terms and conditions at www.simonds.com.au/terms-and-conditions. This package applies to VIC Range range only. Please speak with your sales consultant for further details. Pricing is current at 16/03/2023.