



*Price excludes: fencing, landscaping, concrete pavers, planter boxes, decking.

FROM

\$584,191*

Lot 839 Garrett Street
Provenance
Huntly

AMIRA 25 YALE FACADE

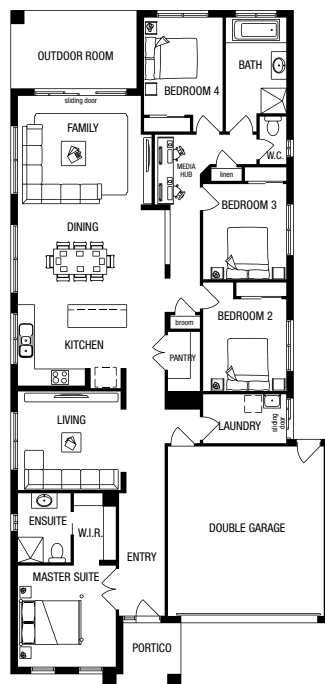
BLOCK SIZE: 375m²

4 | 2 | 2 | 2

PACKAGE INCLUDES:

The Amira 25 with Yale facade built to our industry leading base specifications and land, plus:

- Lifetime structural guarantee#
- Large 900mm wide stainless steel appliances
- 2550mm high ceilings
- Gas ducted heating
- BAL 12.5 requirements^
- Fibre optic package
- Window locks to all ground floor windows
- Solar Hot Water System
- Rainwater Tank
- Floor Coverings throughout
- 450mm Eaves front facade
- Stone Benchtops to kitchen, ensuite and bathroom
- Downlights throughout living areas
- Feature render to front up to 15m²
- Stunning Facade included



Floor plan shown will vary from facade image shown. Floor plan does not reflect developer guidelines.



1300 METRICON
metricon.com.au

FREEDOM

m
metricon

Image may include upgrade items and may depict fixtures, finishes and features not supplied by Metricon such as landscaping and fencing. Accordingly, any prices in this flyer do not include the supply of any of those items. *Packages correct at time of publishing and subject to change without notice. Package price excludes flooring, external lighting, telephone service, customer account opening fees, stamp duty on land, legal fees and conveyancing costs including titles and property report. Floor plan is a representation of a Aspire facade unless otherwise stated. Metricon reserves the right to alter the images or descriptions without notice. See metricon.com.au for full details of standard inclusions and /or terms and conditions. Land supplied by developer. Land prices and availability are subject to change without notice. All home & land packages are subject to developer approval. #For details on our lifetime structural guarantee please read our terms and conditions at <http://metricon.com.au/terms-and-conditions>