



Price excludes: Fencing, Landscaping, Concrete pavers, Planter boxes, Decking

\$638,600*

LOT 419, CARISBROOK
CRESCENT
ALLUVIUM ESTATE
WINTER VALLEY

LUNETTA 19
VOGUE FACADE

BLOCK SIZE | 468M²



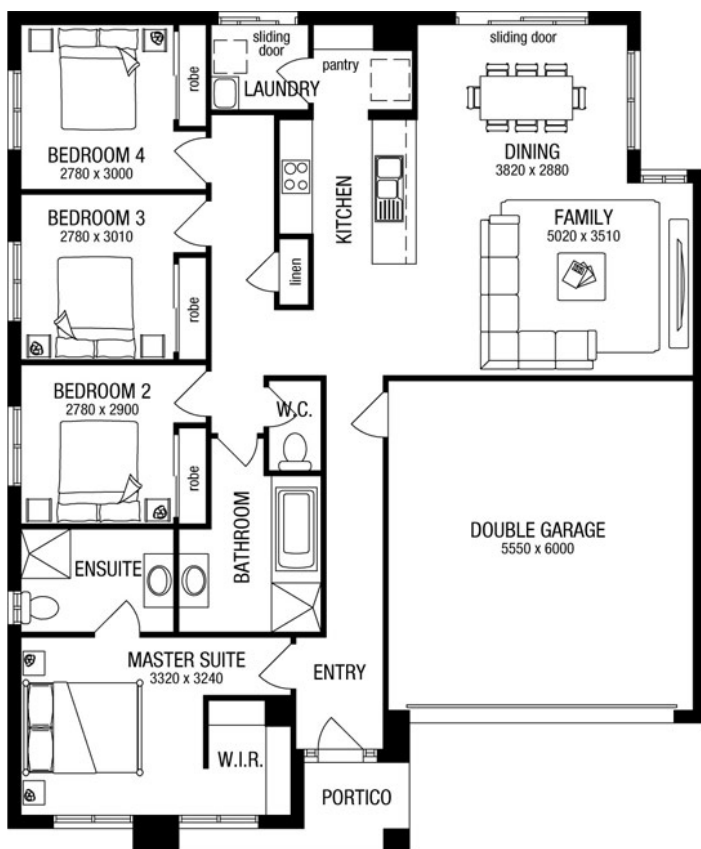
4



2



2



PACKAGE INCLUDES:

THE LUNETTA 19 WITH VOGUE FACADE
BUILT TO OUR INDUSTRY LEADING
BASE SPECIFICATIONS AND LAND,
PLUS:

- ✓ Fixed site costs[^]
- ✓ Laminate timber flooring
- ✓ Luxury carpet to bedrooms
- ✓ Stainless steel oven & cooktop
- ✓ Contemporary tapware
- ✓ Stainless steel canopy rangehood
- ✓ Remote controlled garage door
- ✓ Feature render to façade
- ✓ Fibre Optic Package
- ✓ Lifetime structural guarantee#
- ✓ BAL 12.5 requirements^o
- ✓ 450mm Eaves front facade



**Easy &
Affordable.**

1300 METRICON
www.metricon.com.au

BUILD WITH CONFIDENCE

LIFETIME

STRUCTURAL GUARANTEE

homesolution

m
metricon

*Image may include upgrade items and may depict fixtures, finishes and features not supplied by Metricon such as landscaping, fencing and driveway. Accordingly, any prices do not include the supply of any of those items. Packages correct at time of printing and subject to change without notice. Package price excludes external lighting, telephone service, customer account opening fees, stamp duty on land, legal fees and conveyancing costs including titles and property report. Floorplan is a representation of an Aspire façade unless otherwise stated. Metricon reserves the right to alter the images or descriptions without notice. See metricon.com.au for full details of standard inclusions and/or terms and conditions. Land prices and availability are subject to change without notice. All home & land packages are subject to developer approval. #For details on our lifetime structural guarantee please read our terms and conditions at <http://www.metricon.com.au/terms> Newfield Real Estate Pty Ltd ACN 159 312 722, Licence number 028051L. VIC Builder's Licence: CDB-U 52967. Package Printed Date: 02/08/2022 Price Region: Ballarat