



*Price excludes: fencing, landscaping, concrete pavers, planter boxes, decking.

FROM

\$599,609*

Lot LOT 628 Cumberland Blvd
Alluvium
Winter Valley

LAWSON 22 MK2 TRADITIONAL FACADE

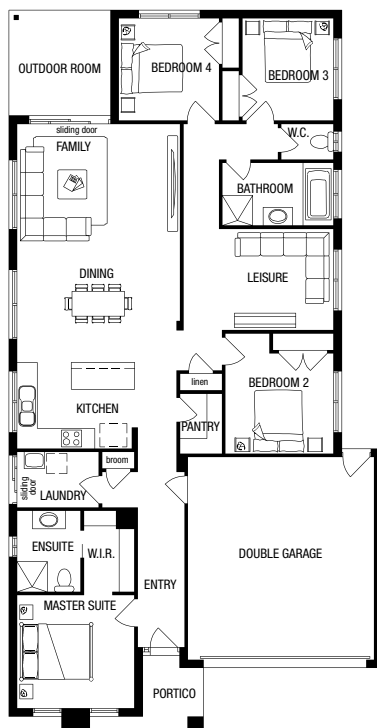
BLOCK SIZE: 400m²

4 | 2 | 2 | 2

PACKAGE INCLUDES:

The Lawson 22 MK2 with Traditional facade built to our industry leading base specifications and land, plus:

- All flooring covered throughout your entire home
- Stylish timber laminate floors & carpet to bedrooms (choice of colours)
- Quality tiles to bathrooms, ensuite and laundry
- 20mm Stone Benchtops to Kitchen
- 2 Sets of Overhead Cupboards to Kitchen
- 900mm Stainless Steel dual fuel cooker + Glass Canopy Rangehood
- Coloured Concrete driveway
- Remote controlled garage door
- Lifetime Structural Guarantee



Floor plan shown will vary from facade image shown. Floor plan does not reflect developer guidelines.



Easy & Affordable.

1300 METRICON
metricon.com.au

homesolution | metricon

Image may include upgrade items and may depict fixtures, finishes and features not supplied by Metricon such as landscaping and fencing. Accordingly, any prices in this flyer do not include the supply of any of those items. Packages correct at time of publishing and subject to change without notice. ^Package includes exotic timber laminate, two strip floating floor. †Luxury carpet is 100% Nylon plush pile carpet. Package price excludes external lighting, telephone service, customer account opening fees, stamp duty on land, legal fees and conveyancing costs including titles and property report. Floor plan is a representation of a Traditional facade unless otherwise stated. Metricon reserves the right to alter the images or descriptions without notice. See metricon.com.au for full details of standard inclusions and/or terms and conditions. Land prices and availability are subject to change without notice. All home & land packages are subject to developer approval. #For details on our lifetime structural guarantee please read our terms and conditions at <http://www.metricon.com.au/terms>